

DEVELOPMENT NEWS >>>>

CONNECTING
COMMUNITIES

FACILITATING
JOBS

GROWING
BUSINESSES

DEVELOPMENT IN UNION GROVE



One of 17 communities in Racine County, the Village of Union Grove is conveniently located at the intersection of Hwy 45 and Hwy 11, only five miles west of Interstate 94, and short drive to Milwaukee or Chicago.

Businesses find this the perfect location to manufacture, distribute and provide services to the Chicago-Milwaukee region. Residents enjoy the safety and friendliness of small-town living, the quality of the local school system and easy access to the nearby cities.

[LEARN MORE ABOUT UNION GROVE](#)



The Granary

State St. and Mill Ave.
Union Grove, WI

The Granary development is a 73-unit multi-family development project consisting of five townhouse-style apartment buildings near State St. and Mill Ave. and one commercial building on Main St.

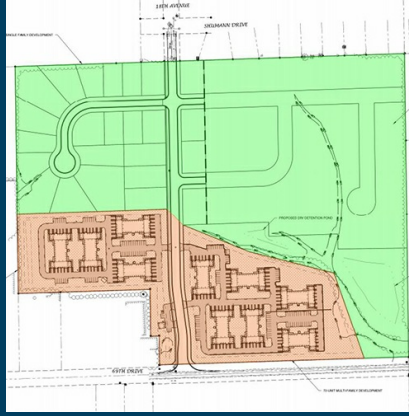
DEVELOPER

Sawall Development

STATUS

Accepting Tenants

GRAND OPENING - Sept. 5



The Residences at Dunham Grove

69th Dr. east of Shumann Dr.
Union Grove, WI

The Residences at Dunham Grove is a proposal for 63 single-family residential units and 120 multi-family units (10 buildings with 12 units) on a 45-acre parcel in the southeast corner of Union Grove.

DEVELOPER

Pre3 Development

STATUS

Approved

Groundbreaking - Fall 2019



Canopy Hill

S. Colony Ave. and 58th Rd.
Union Grove, WI

Canopy Hill has been re-introduced with plans for 240 market rate multifamily units, 202 single family lots and approximately 80 units total of both senior independent and assisted living.

DEVELOPER

Bear Development

STATUS

Under Review

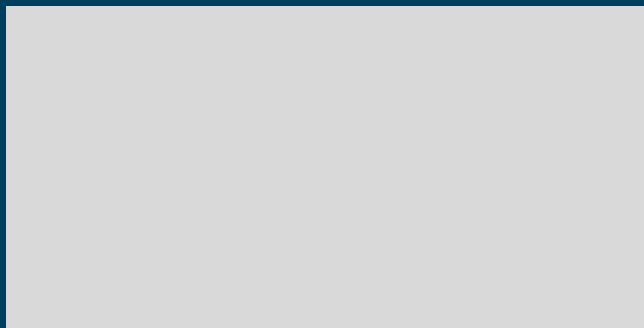
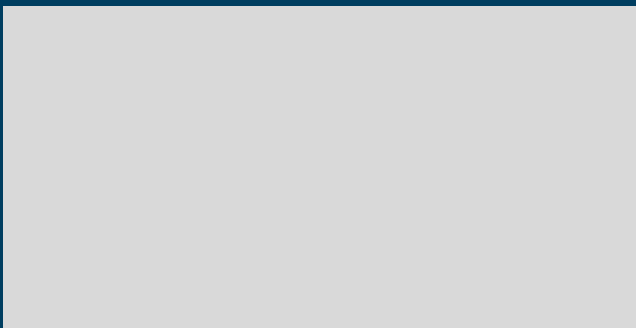


WANT TO LEARN MORE?

Contact Jordan Brown
Business Recruitment Specialist
RCEDC

262-898-7444
jbrown@rcedc.org

FEATURED PROPERTIES





Mount Pleasant Business Park West

Mount Pleasant, WI

A shovel-ready, Class A business park development with I-94 visibility. Located within a TIF district in the Village of Mount Pleasant. Up to 66 contiguous acres available.

[LEARN MORE](#)

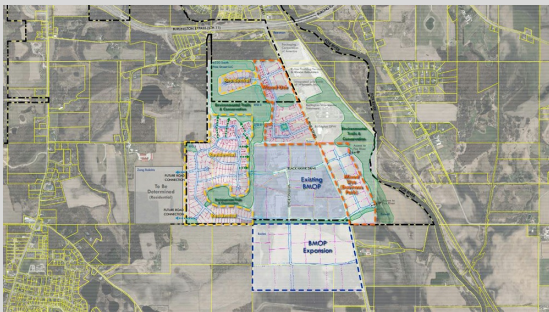


DeBack Farms Business Park

Caledonia, WI

A Wispark development located in a TIF district in the Village of Caledonia. Positioned on a diamond interchange with I-94 visibility, the Park can accommodate a 1,170,00 SF building.

[LEARN MORE](#)



Burlington Manufacturing and Office Park

Burlington, WI

Affordably priced municipally owned shovel-ready land, located within the City of Burlington. Expansion of the Business Park is planned to accommodate more development.

[LEARN MORE](#)

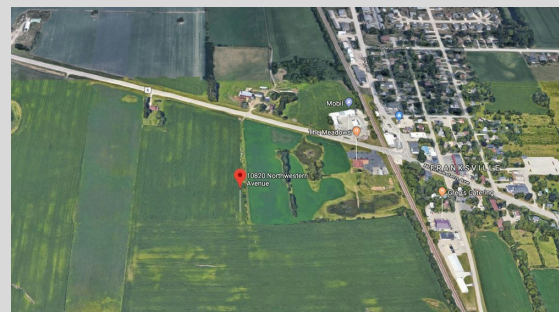


Enterprise Business Park

Sturtevant, WI

Located less than two miles east of I-94 via HWY 11. This 67-acre shovel-ready business park will be home to a second 439,309 SF spec building. Construction start summer 2019.

[LEARN MORE](#)



Grandview Business Park

Yorkville, WI

A Class A business park strategically located at I-94 and HWY 20. Future home to two 193k SF spec industrial buildings as well as shovel-ready land sites.

[LEARN MORE](#)

10820 Northwestern Ave (Hwy K)

Caledonia, WI

Located in the Village of Caledonia, two miles east of I-94. This 166-acre site has the potential for rail access.

[LEARN MORE](#)

To search for other land and building options in Racine County, use the site selector tool!

[MORE AVAILABLE SITES](#)

TALENT RECRUITMENT



How do we recruit the qualified talent to work in Racine County to bridge the gap in workforce supply and demand? Following the launch of the Greater Racine County website, a proactive initiative was developed to recruit talent in specific industry categories.

[LEARN MORE](#)

DEVELOPMENT IN THE NEWS



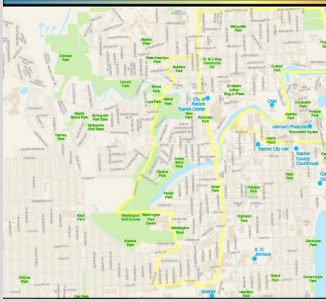
RACINE COUNTY'S PREMIERE LOCATION LEADS TO EXPANSION FOR POCLAIN

The world's leading specialist in hydrostatic transmissions, Poclain Hydraulics, Inc., established a North American headquarters in Racine County over 20 years ago and continues to benefit from its location in the Chicago-Milwaukee Corridor.

[READ MORE](#)

OPPORTUNITY ZONES

The three designated Opportunity Zones in the City of Racine offer a new tool to encourage investment and development in the



City of Racine.

[READ MORE](#)



LAURA MILLION FEATURED ON PODCAST, DEVELOP THIS!

Laura Million, Business Development Manager at RCEDC, was recently featured on the economic and community development hashtag podcast, Develop This!

[READ MORE](#)



FOXCONN GOES VERTICAL

About 200 tradespeople are currently at work at the Wisconn Valley Science & Technology Park in the Village of Mount Pleasant.

[READ MORE](#)

RCEDC
Racine County Economic Development Corp.

