



Welcome to Mt. Pleasant, Foxconn!
Taiwanese Technology Company

Foxconn plans to build its \$10 billion manufacturing campus in the southwestern corner of Mount Pleasant. The announcement was made before a full house at the SC Johnson iMET Center.



November 2017

In This Issue

- [Foxconn Announcement](#)
- [Expansions & Relocations](#)
- [Incentives Available](#)
- [Featured Developments](#)
- [Development In The News](#)

WATCH ANNOUNCEMENT

Expansions & Relocations

Merz North America, Inc. Expands
Specialty Healthcare Company

Merz North America, Inc. plans to expand its operations in the Town of Yorkville. As a part of the expansion, the company plans to consolidate three leased facilities into one expanded location in the Grandview Business Park.



READ MORE

Johnson Health Tech Relocates
Award-Winning Fitness Equipment Manufacturer

Johnson Health Tech North America will be relocating its manufacturing operations to the Town of Yorkville. The relocation will provide a more modern facility and increase manufacturing efficiency. Johnson Health Tech has signed



[READ MORE](#)

Cookinpellets.com Plans to Grow Amazon's Best-Selling Pellet Brand

Successful entrepreneurs, Chris and Julie Becker, have purchased the historic building that is the Rapids Business Center. The three-story building was built in 1955 and sits on 6.78 acres at 35,848 SF. With the growth of Cookinpellets.com, the newly purchased Rapids Business Center allows the Beckers to house Cookinpellets.com and offer space for other small businesses.



[READ MORE](#)

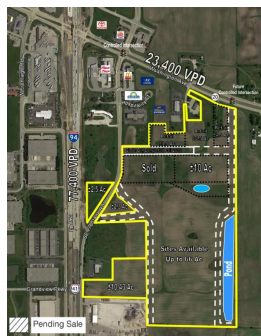
Incentives

Incentives Available

Companies relocating to or expanding an existing operation in Racine County may be eligible for incentives to encourage business growth, investment and job creation.

Contact **Jordan Brown** today!

Featured Properties



Mount Pleasant Business Park West Mount Pleasant, WI

A NAI MLG business park development with I-94 visibility. Located within a TIF district in the Village of Mount Pleasant. Up to 66 contiguous acres available.

[MORE](#)



DeBack Farms Business Park Caledonia, WI

A Wispark development located in a TIF district in the Village of Caledonia. Positioned on a diamond interchange with I-94 visibility the park can accommodate a 1,170,00 SF mega site.

[MORE](#)



Grandview Business Park Yorkville, WI

A 180-acre business park strategically located at Interstate 94 and Highway 20. The Wispark development located in Yorkville currently has 58 acres available.

[MORE](#)



Enterprise Business Park Sturtevant, WI

Located less than two miles east of I-94 off HWY 11. A 67 acre shovel ready business park with 167,000 SF Class A space available.

[MORE](#)

To search for other land and building options in Racine County, use the site selector tool!

[LAUNCH SITE SELECTION TOOL](#)

Development In The News

Oakes adding two buildings to business park

Gateway eyes \$5M iMET expansion for Foxconn training

Racine RDA unveils new initiative and website



[Forward this email](#)

STAY CONNECTED

