



## Supply Chain Management Event

Held at the Gateway iMET Center

The Council of Supply Chain Management Professionals attendees heard from Jordan Brown of RCEDC about economic development opportunities in Racine County and about Foxconn's supply chain opportunities from the keynote speaker, Dr. Bill Mitchell.

Dr. Mitchell, CEO of Aguila (A Foxconn Subsidiary), and VP of Business Operations for Foxconn, introduced the audience to the impact the economic giant Foxconn will have on the region and the state as a whole.



Stay tuned for more upcoming events.

**February 2019**

### In This Issue

[Supply Chain Event](#)

[Incentives](#)

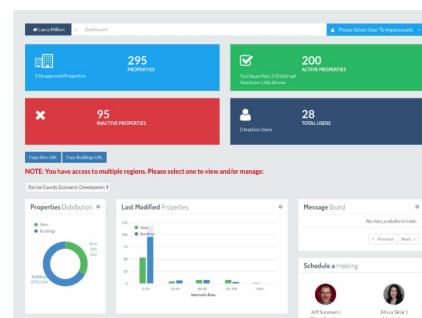
[Featured Properties](#)

[Development In The News](#)

## Free Site Selection Tool

Businesses and Site Selectors are seeking the right location in Racine County. Make sure your properties are listed on RCEDC's free database. Share your real estate listings with the widest possible audience through RCEDC's GIS site selection tool, powered by Zoom Prospecter.

Listed commercial or industrial sites (land or buildings), available for sale or lease can benefit from the enhanced publicity you'll get through connectedness to the State and Regional site selector portals such as Locate in Wisconsin and Choose Milwaukee.



**Incentives**

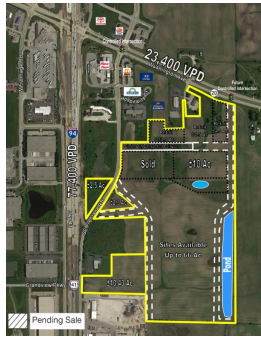
**Incentives Available**

Companies relocating to or expanding an existing operation in Racine County may be eligible for incentives to encourage business growth, investment and job creation.

Contact **Jordan Brown** today!



**Featured Properties**



**Mount Pleasant Business Park West**  
Mount Pleasant, WI

A NAI MLG business park development with I-94 visibility. Located within a TIF district in the Village of Mount Pleasant. Up to 66 contiguous acres available.

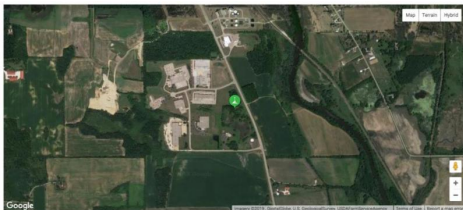
[MORE](#)



**DeBack Farms Business Park**  
Caledonia, WI

A Wispark development located in a TIF district in the Village of Caledonia. Positioned on a diamond interchange with I-94 visibility, the park can accommodate a 1,170,00 SF building.

[MORE](#)



**Burlington Manufacturing and Office Park**  
Burlington, WI

Affordably priced municipally owned shovel ready acres located within the City of Burlington. Expansion planned to accommodate more development.

[MORE](#)



**Enterprise Business Park**  
Sturtevant, WI

Located less than two miles east I-94 off HWY 11. This 67-acre shovel ready business park is the future home to a 438,309 SF spec building.



### Grandview Business Park Yorkville, WI

A 180-acre business park strategically located at Interstate 94 and Highway 20. The Wispark development located in the Village of Yorkville currently has 58 acres available.

MORE



### 10820 Northwestern Avenue (Hwy K) Caledonia, WI

This approximately 58 acre parcel is adjacent to an additional 87 acre site located at 10820 Northwestern Avenue. Potential for rail to extend to this property.

MORE

To search for other land and building options in Racine County, use the site selector tool!

MORE AVAILABLE SITES

## Development In The News

Consultants Hired to Create Plan for Regency Mall Area

269 Apartments Planned for Mount Pleasant

Downtown Racine's "Opportunity Zones"

County talent recruitment specialist position created



Forward this email

STAY CONNECTED

